

MIRANDA SR. SEC. SCHOOL

CLASS - IV

SUBJECT - E.V.S

ANSWER KEY - CH - 2



Knowledge Bee

Plants are really important for the planet for all living things. Plants absorb carbon dioxide and release oxygen from their leaves, which human and other animals need to breathe.



Text Exercise

A. Name the following

1. Part of plant under the ground.
2. Male part of flower.
3. Female part of flower.
4. Food factory of plant.
5. Strong stem of tree.

Root

Stamen

Carpel

Leaves

Trunk

B. Answer the following Questions

1. What are the roots? Name the types of main roots with examples?
2. What is the shoot system of the plant?
3. What are taproots?
4. What are fibrous roots?
5. Write the functions of roots?
6. Write three functions of stems and leaves each?

C. Fill in the blanks

1. The main function of the leaf is to prepare Food for the plant.
2. Food Storage roots store food prepared by the plant.
3. Stem, Leaves and Flower form the shoot system of the plant.
4. Roots that grow downwards from the branches are called Aerial roots.
5. A Taproot has a thick main root and it grows straight downwards.

D. Write True or False

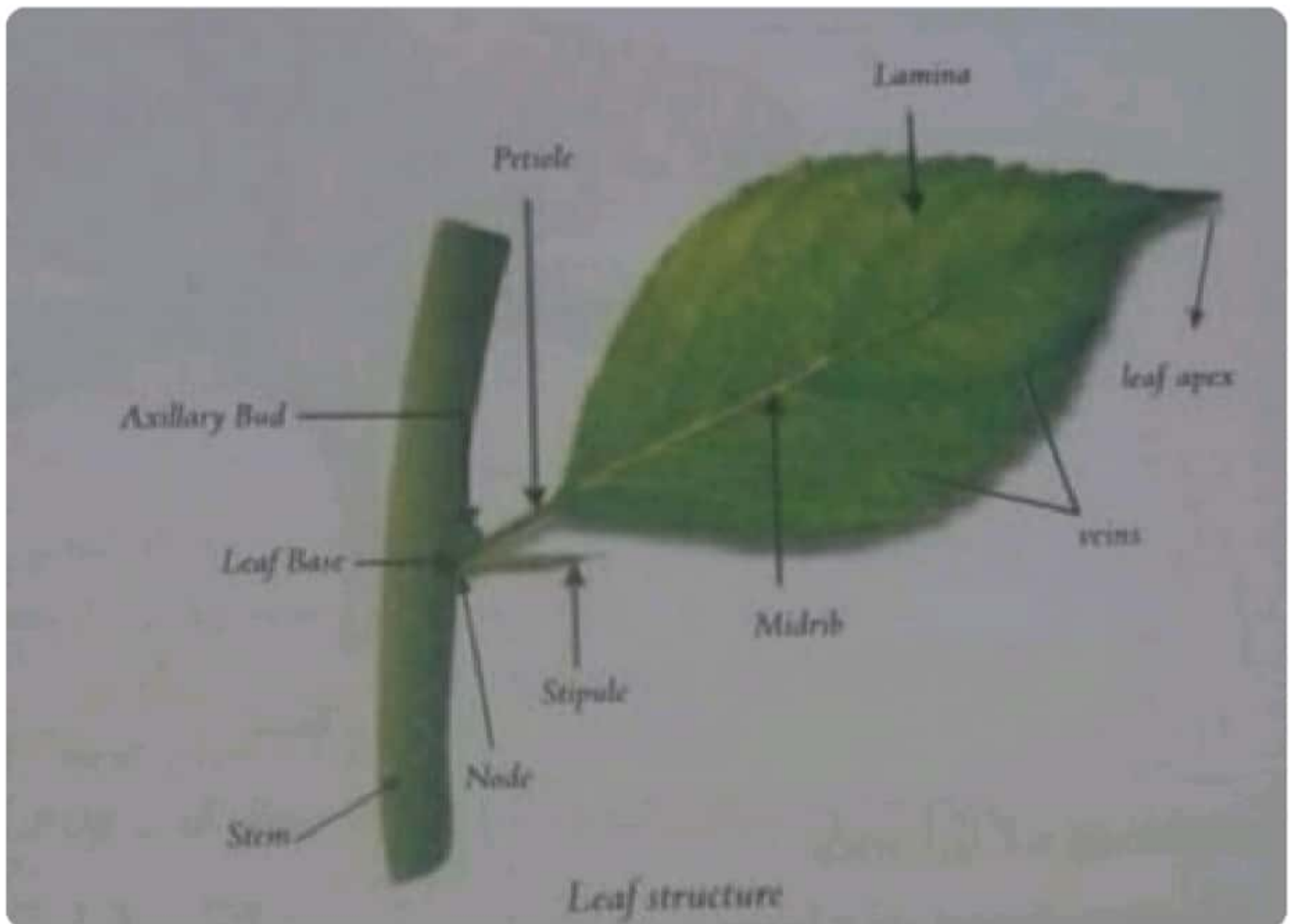
1. The taproot is quite thick and its branches are much thinner.
2. Grass, wheat and rice have fibrous roots.
3. Stems absorb water and minerals from soil.
4. Roots are the food factory of the plant.

True

True

False

False



- Answer the following.

Q-1 What are roots? Name the types of main root with example.

Ans- The part of plant that grows under the ground is called root. The part of the plant that grows above the ground is called shoot. The part of the plant that grows under the ground is called root. The part of the plant that grows above the ground is called shoot. The part of the plant that grows under the ground is called root. The part of the plant that grows above the ground is called shoot.

There are two types of main roots

1) Tap root

Ex - Radish , carrot

2) Fibrous root

Ex - Wheat , rice

Q-2 What is the shoot system of the plant?

Ans- The shoot system is the system of plant that includes all the parts of the plant that grow above the ground.

Q-3 What are taproots?

Ans- The root that has a thick main root and grow straight downwards is called taproot .

Q-4 What are Fibrous roots?

Ans- The root that grow from the base of the stem and it does not grow very deep into the soil is called fibrous root.

Q-5 Write the functions of the roots?

Ans-

1) Roots fix the plants firmly to the ground. This prevents the plant from being pulled easily or blown away by the strong wind.

2) They absorb water and minerals from the soil. These substances are needed for the growth of the plant.

3) We need the topsoil. the most fertile part of the soil for growing healthy crops and tree roots hold the topsoil and prevent it from getting carried away by strong wind or water. Thus, a tree prevents the soil erosion. Soil erosion is the removal of the topsoil due to the force of wind or water.