



# The Hungry Bear

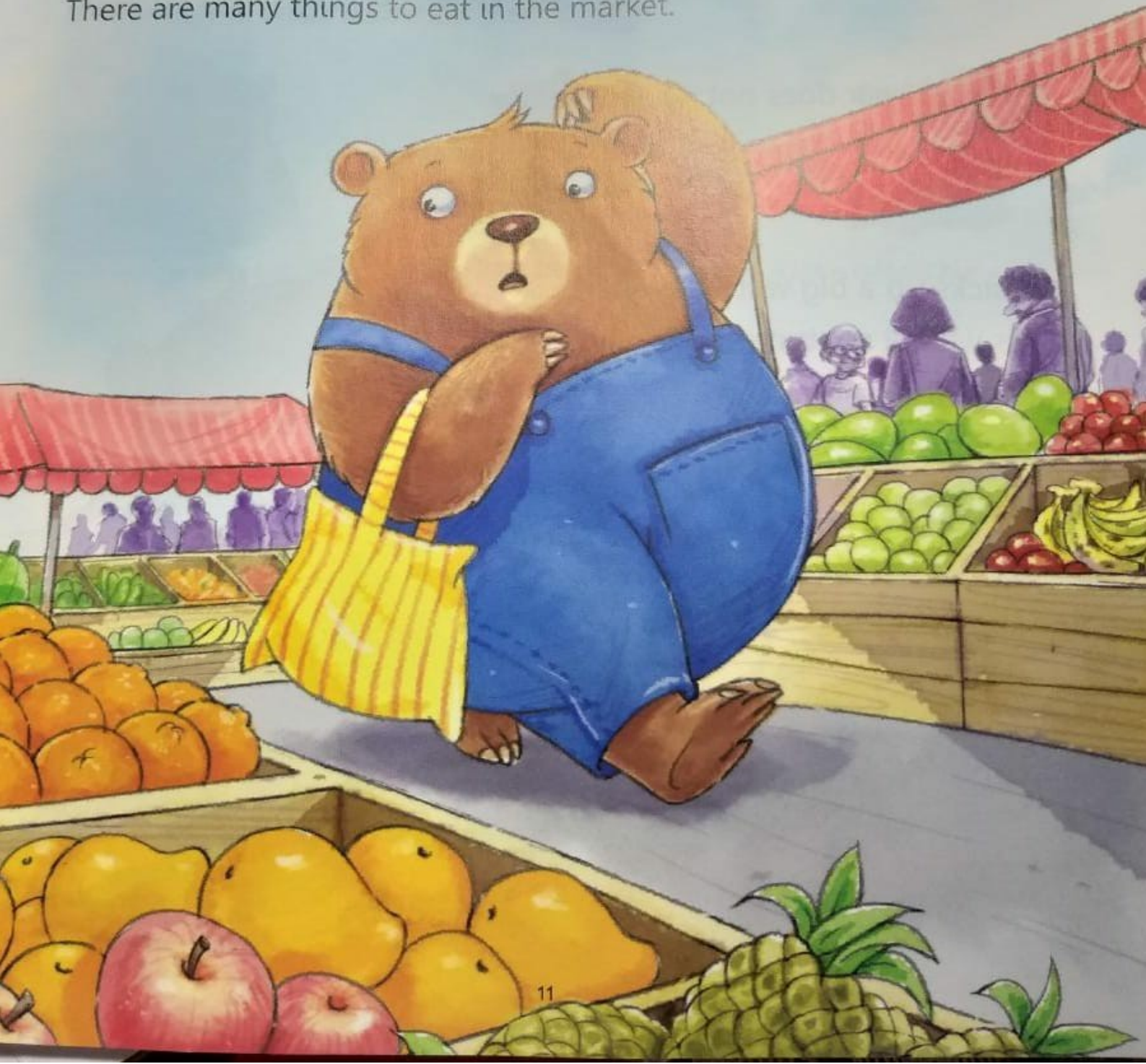
## Warm Up

What do you like to eat when you are hungry? \_\_\_\_\_

A little bear is hungry.

He goes to the market.

There are many things to eat in the market.

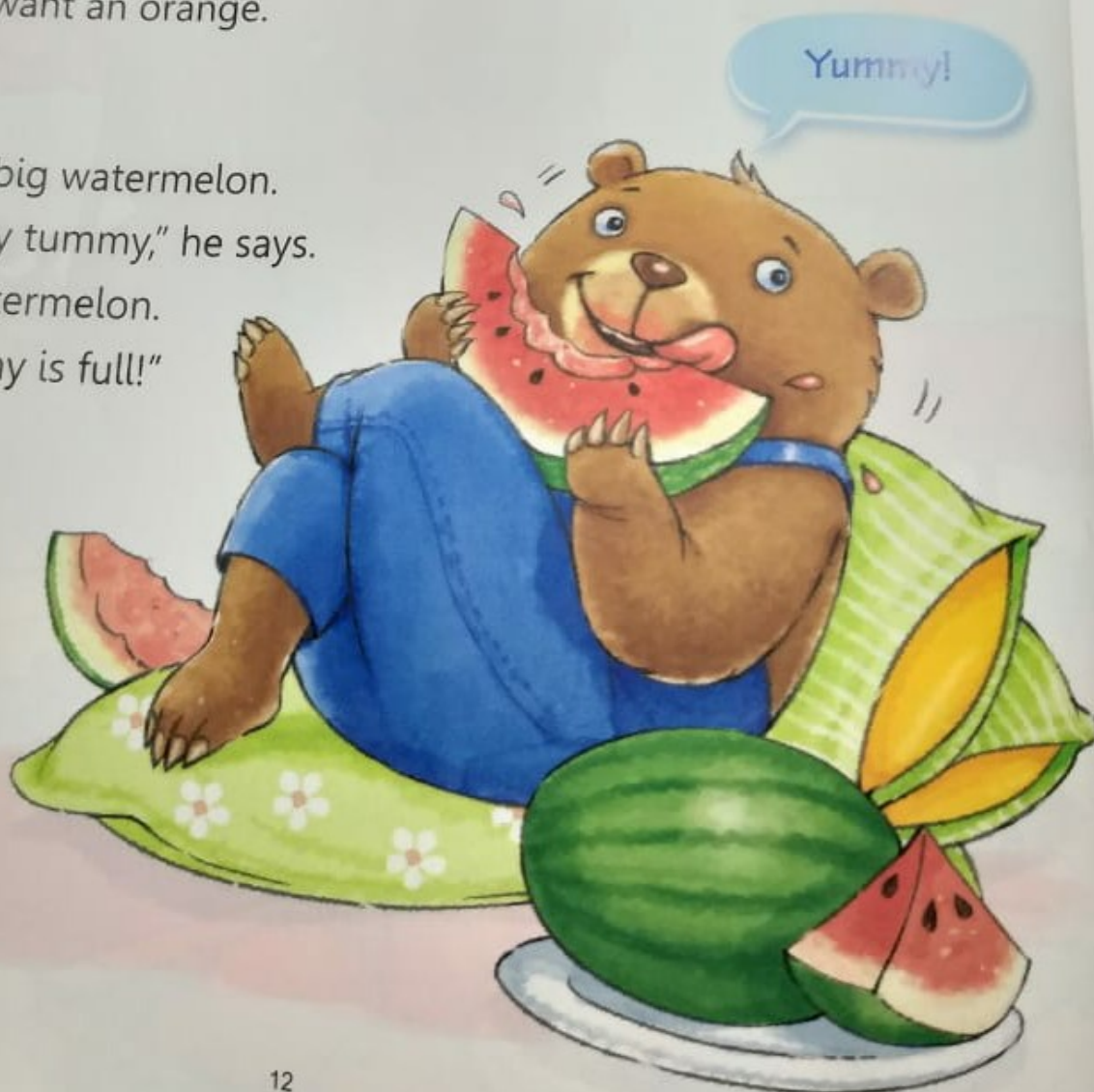






The little bear does not want a mango.  
He does not want an orange.

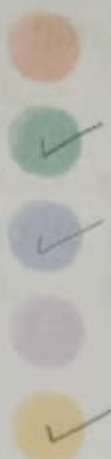
He picks up a big watermelon.  
"This will fill my tummy," he says.  
He eats the watermelon.  
"Now, my tummy is full!"



## ? Question Time

A. Tick (✓) if true.

1. The little bear is sad.
2. He is hungry.
3. He goes to the market.
4. He eats an apple.
5. He eats a watermelon.



B. Number the pictures in the right order.



The little bear eats a big watermelon.

2



The little bear says, "Now, my tummy is full!"

3



A little bear is hungry.

1

C. Answer these questions.

1. Who is hungry?

The *bear* is hungry.

2. Where does the bear go?

The bear goes to the *market*.

3. Name one fruit the bear does not want to eat. *Mango*

4. Which fruit does the bear eat? *Watermelon*





## Words in Use

D. Pick the right name for each group.



Flowers



Animals



People

animals

people

flowers





## Grammar in Use

Read these sentences.

A bear goes to the market. A boy gives him a watermelon.

The words in green are **naming words**.

**Naming words** are the names of people, places, animals or things.  
Here are some more naming words.

girl man woman doctor

cat dog tiger dinosaur

city shop house park

apple pen chair book

E. Circle the names of the things you can see in the picture.

boat fish frog tree hut bird flower sun

dog car shoe kite school girl bag boy



F. Complete these naming words.

b e r

m r k t

o v m g l

m n g o



Listen and Learn 🔊

G. Listen, and write the naming words in the right boxes.



## Let's Write

I. Look at the picture. Fill in the right words.

This is my cat. (dog/cat/bird)

It is brown. (white/black/brown)

It likes to drink milk. (milk/tea/juice)

It has a furry tail. (tail/nose)



## Activity

J. Solve the puzzle with the help of the pictures.

